

Le Tourneau Machine Learning Competition Software Installation

By Ray Holt

Documents

<https://MississippiSTEMAcademy.com/LeTU>

(link in YouTube description)

Python 3.8.8 application (.exe)

Qeexo AutoML Windows installer application (.exe)

Qeexo AutoML Installation Guide (.pdf)

Qeexo AutoML User Guide (.pdf)

Le Tourneau Software Installation Instructions (.pdf)

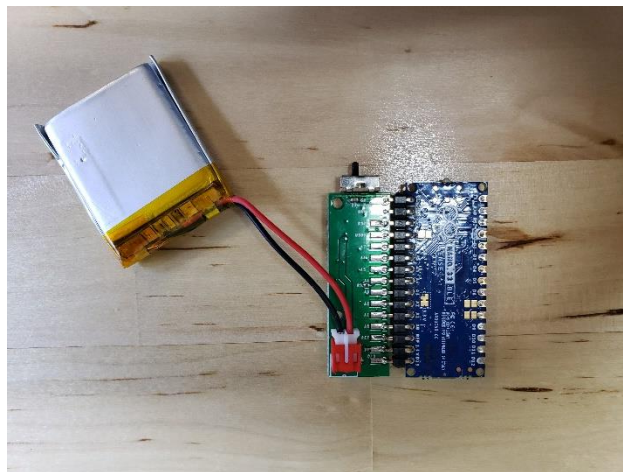
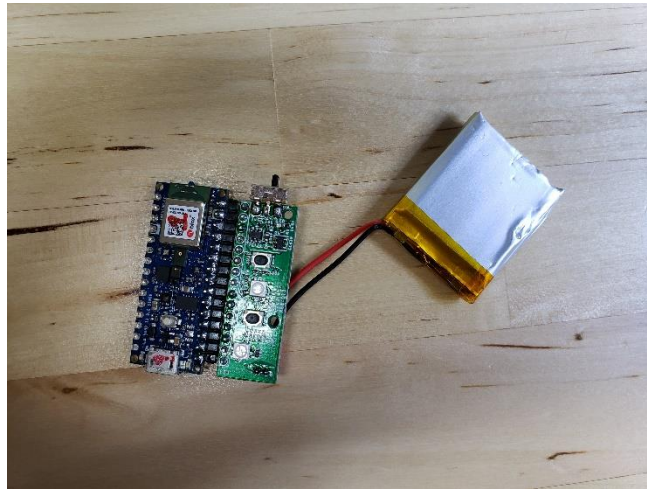
Amazon Data & Charger Cable for Arduino Development

Review of Hardware

Arduino Computer (blue)

Qeexo Interface Card (green)

Battery (silver)



**Download Cable (Micro USB Cable for Arduino BBC
Micro Bit to USB A Data Sync & Charging Cable Power
Supply Cord Cable) **thick****

<https://MississippiSTEMAcademy.com/LeTU>



Software Installation

Python 3.8.8

Qeexo AutoML

<https://MississippiSTEMAcademy.com/LeTU>

1. Confirm Python is not currently installed on your desktop or laptop.
2. Confirm Qeexo AutoML is not currently installed on your desktop or laptop.
3. Download Python 3.8.8 & AutoML on your desktop or laptop.
4. Install Python 3.8.8
 - Select Customize installation. On 2nd screen make sure “Install for all users” is not checked and check “Add Python to environment variables”

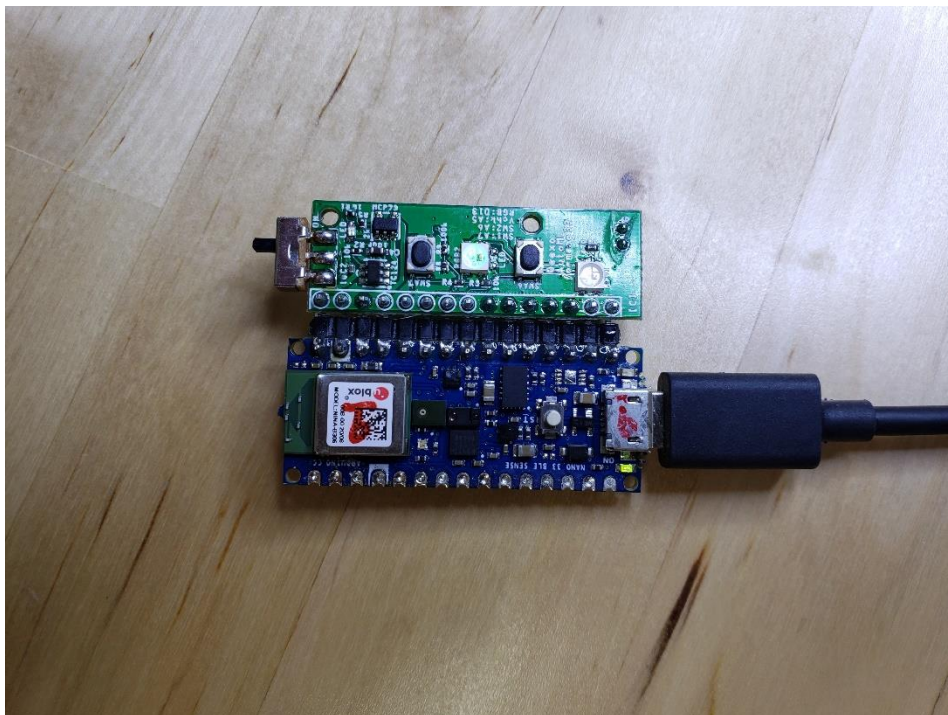
5. Install AutoML on your desktop or laptop.
 - Chrome needs to be closed.
 - Black Command Window will go away in about 10 seconds.
 - Click Next on the Proxy Settings.
 - Click Finish after installation.

IMPORTANT: After installation AutoML is automatically running on your computer. You do not have to run it. AutoML should be running in the Taskbar bar. To verify, click the up arrow in the bottom right corner of the Task Bar and right-click on the AutoML logo.

Hardware Preparation

A. Prepare Hardware

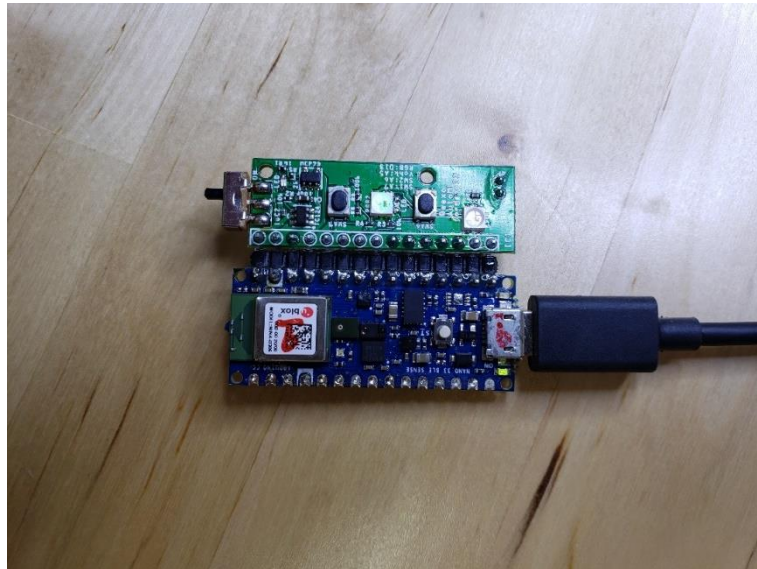
1. You will need an Arduino Nano 33 BLE Sense sensor module. This is the Arduino you were sent. (AutoML will work with or without the headers.)



2. You will need to use the “thick” micro-USA data and charger cable to connect the Arduino to your computer.

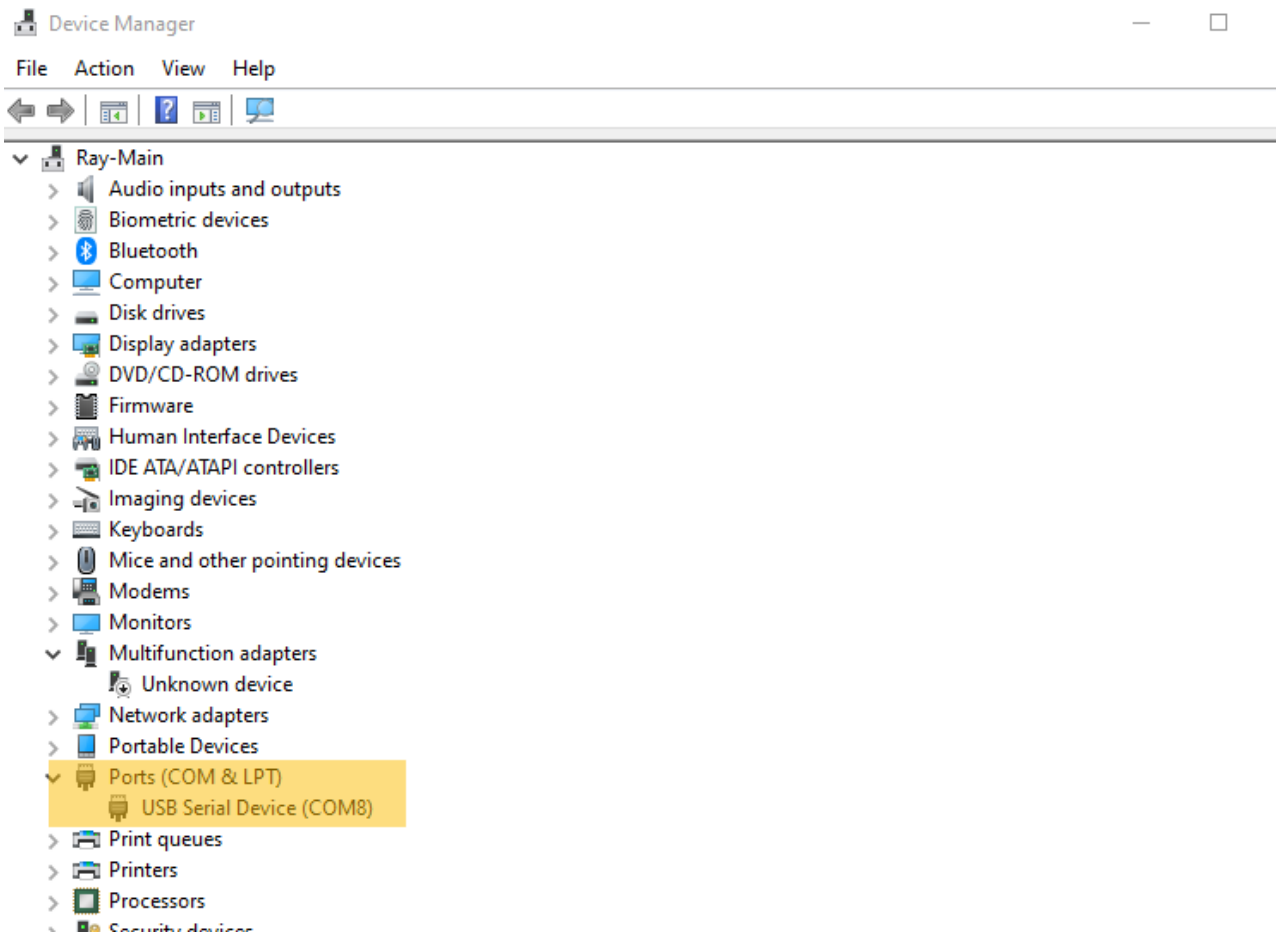
B. Connect Hardware

1. Connect the micro-USB cable between the Arduino Nano 33 BLE Sense module and your laptop.

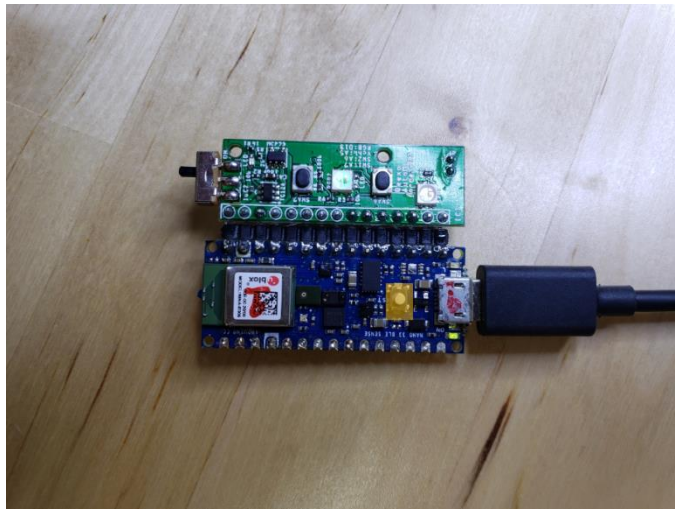


2. Check if your laptop connects the Arduino Nano 33 BLE Sense module. Right click 'This PC', go to 'Properties', 'Device Manager'. You can also search 'Device Manager' in Windows search bar. If there are two USB Serial Device

(COM*) show up under "Ports (COM and LPT)", the device is connected successfully.



3. Before starting development with Qeexo AutoML, quickly double-press the single white RESET button on the sensor module to get it ready for flashing. See yellow square in photo.



4. Both the green and the orange LEDs should light up on the Arduino Nano 33 BLE Sense module.

This indicates that the module is powered and in normal state. When flashing firmware to Arduino Nano 33 BLE Sense module, the green LED will light up and the orange LED should slowly blink.

In certain new Arduino firmware, both green and orange LEDs light up, instead of the orange LED slowly blinking. If both LEDs do not light up for some reason, pressing the reset button once would help.

STEP 3: Run Qeexo AutoML. You should now have everything you need to run Qeexo AutoML.

Open your Chrome browser, navigate to AutoML.Qeexo.com and log in with the account you registered.

For help on using Qeexo AutoML, refer to the [QeexoAutoML_User Guide](#) which can be downloaded from the Resources link located under the small down arrow in the upper-right corner of Auto ML.